

CHILD MARRIAGE IN INDONESIA

VISUAL MAPS

Created by Podchara (Sun) Boonbhati, Sida Chu, Valensia Tandreas

Causal Loop Diagrams

Fig. 1 Central map of vulnerability

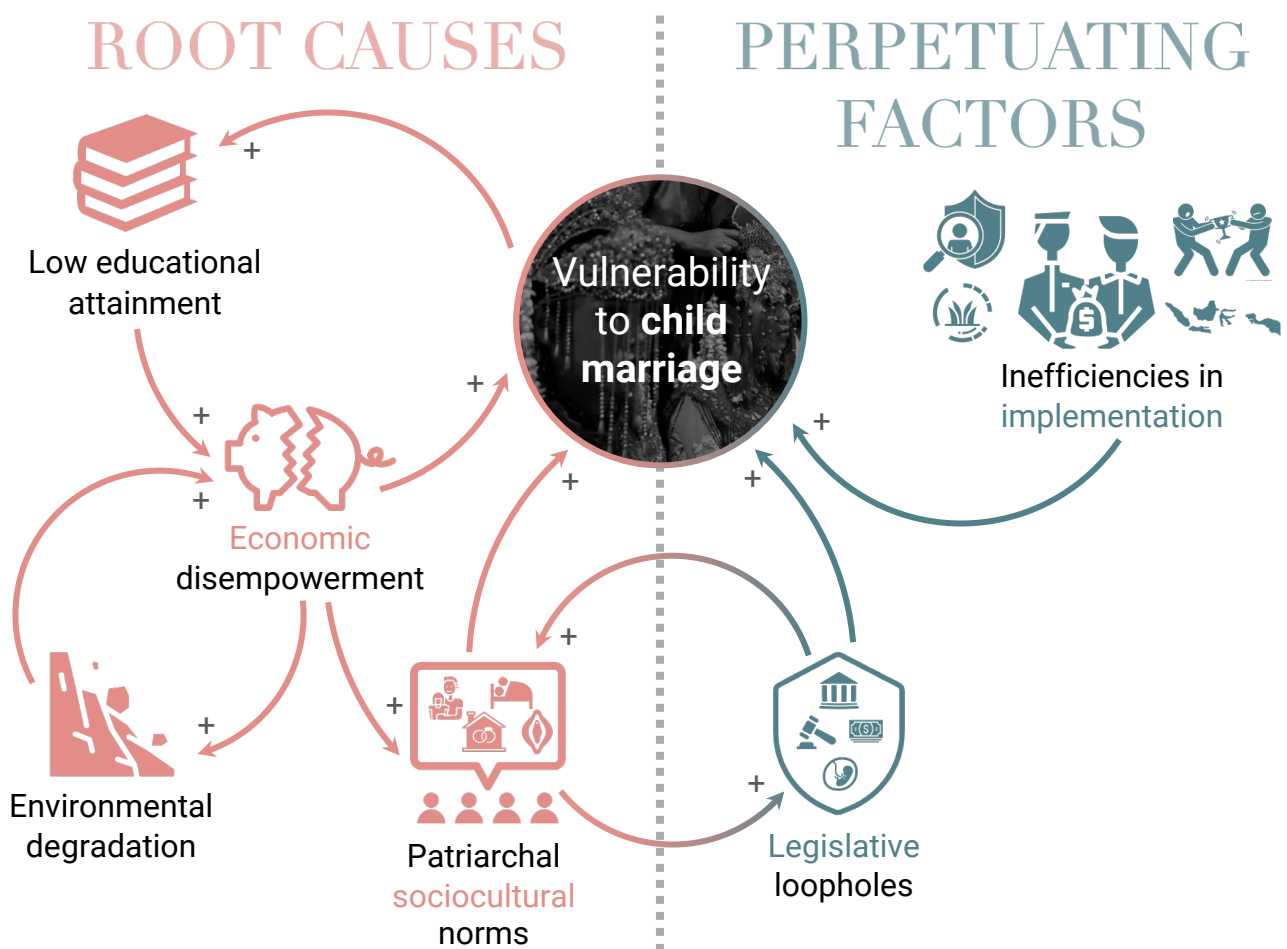


Fig. 1 Our central system of vulnerability. It shows the two root causes of child marriage – economic disempowerment and patriarchal norms – and the two perpetuating factors, legislative loopholes and inefficiencies in implementation. Loops represented include a poverty – education loop, a poverty – environment loop, and a culture – law loop, which will all be explained later.

Fig. 2 Poverty – education loop

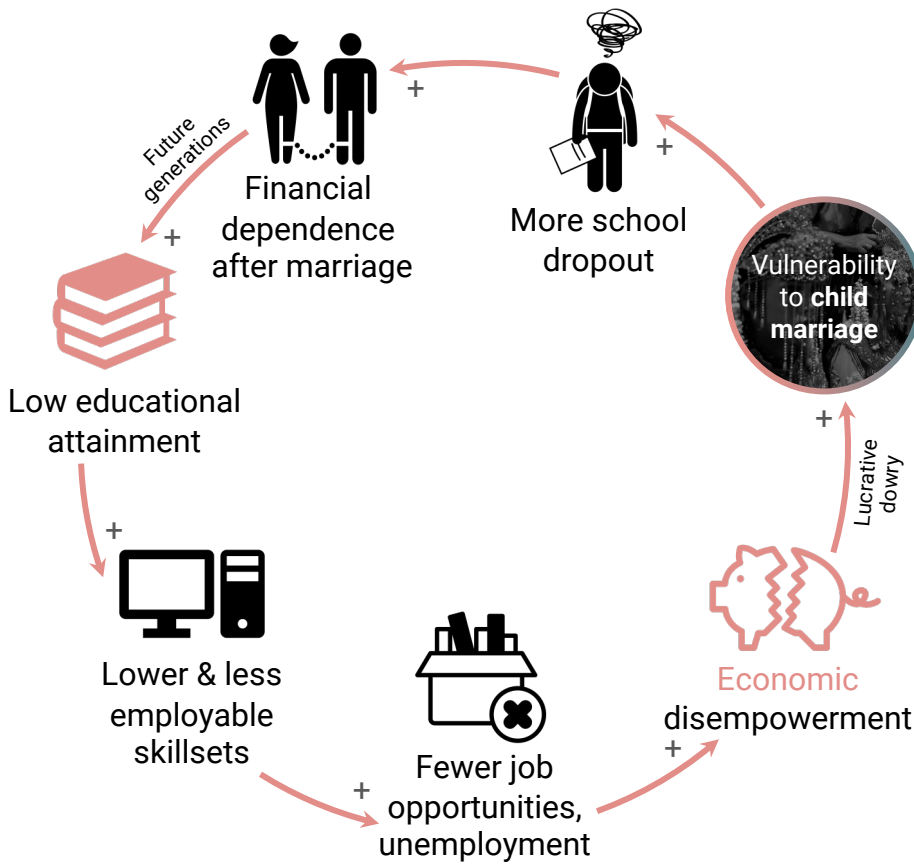


Fig. 2 Poverty – education loop.

Fig. 3 Poverty – environment loop

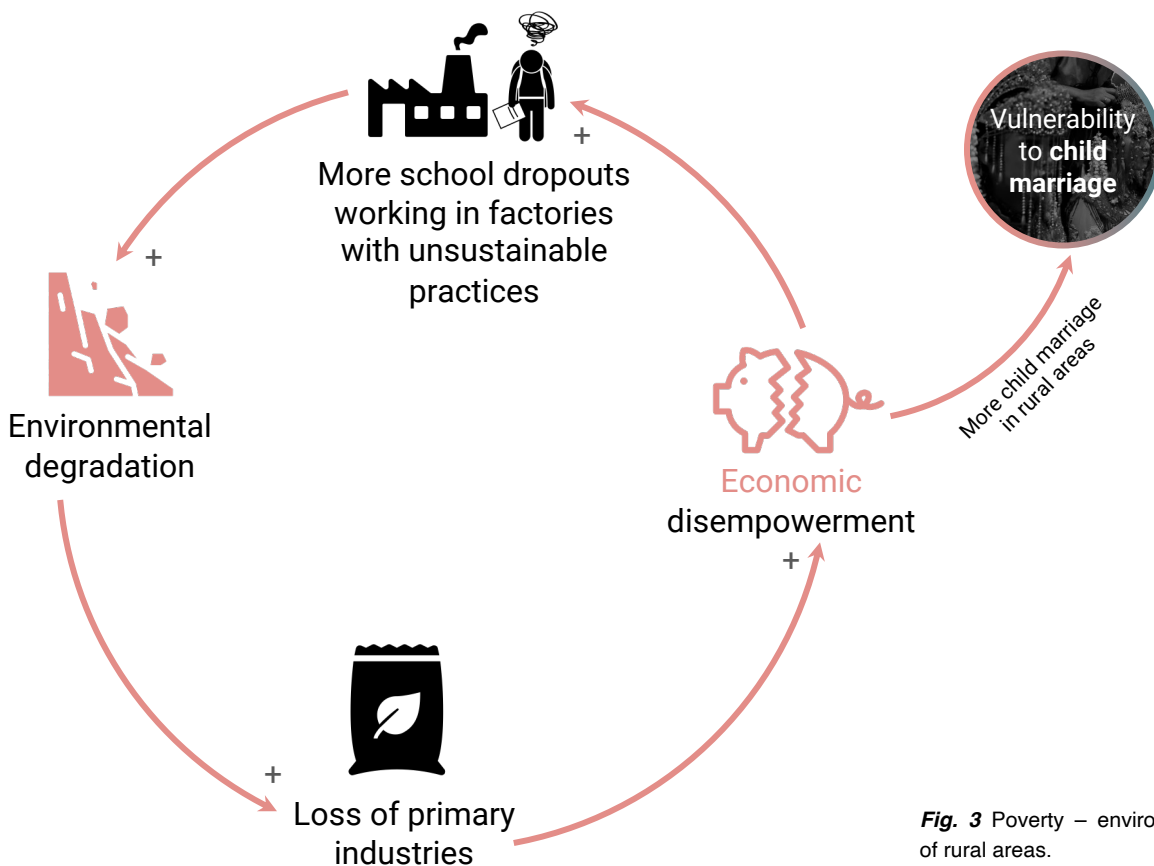


Fig. 3 Poverty – environmental loop of rural areas.

Fig. 4 Poverty – information access – mindset – sexual violence & contraception loop

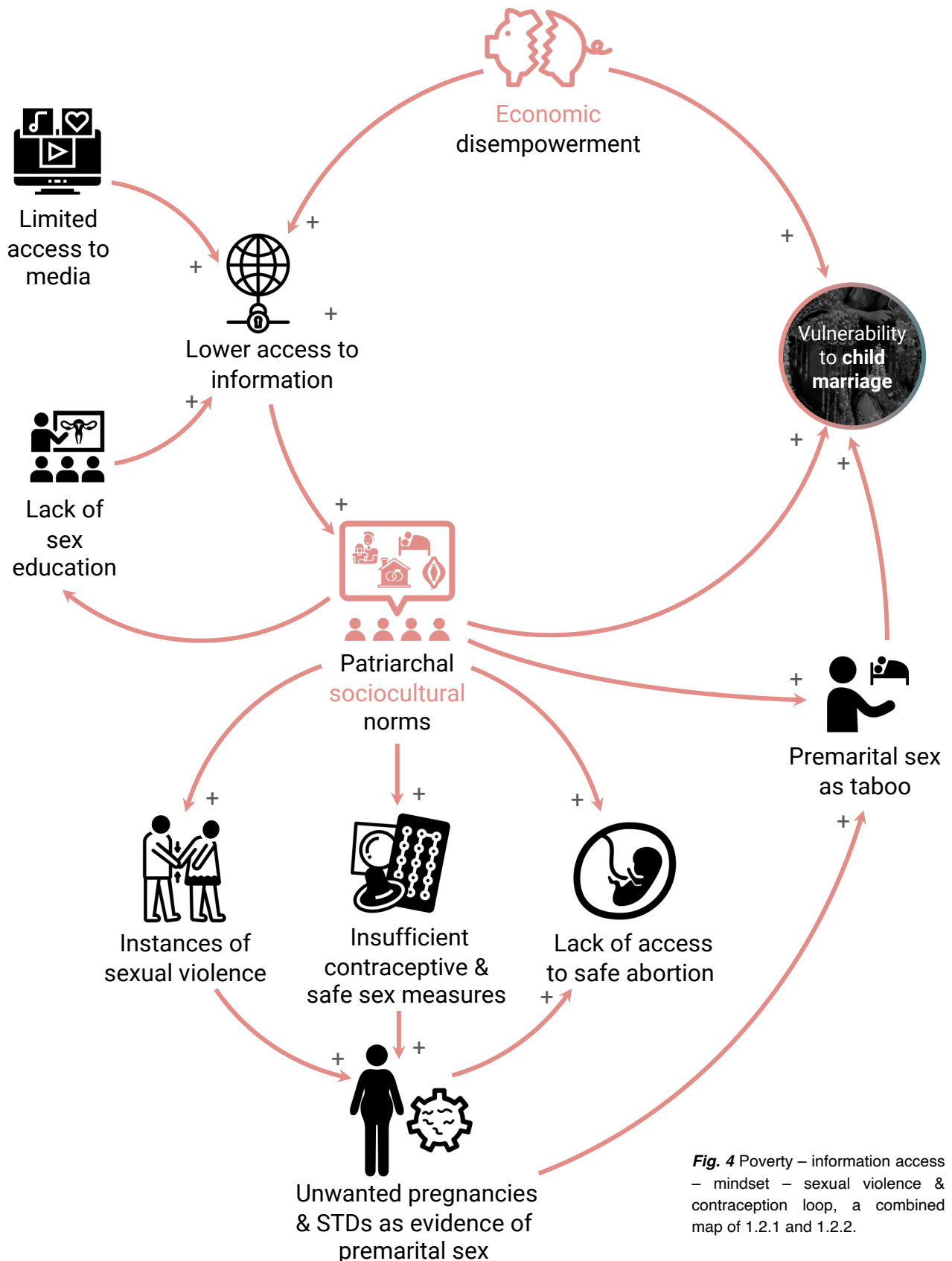


Fig. 4 Poverty – information access – mindset – sexual violence & contraception loop, a combined map of 1.2.1 and 1.2.2.

Fig. 5 Culture – law loop

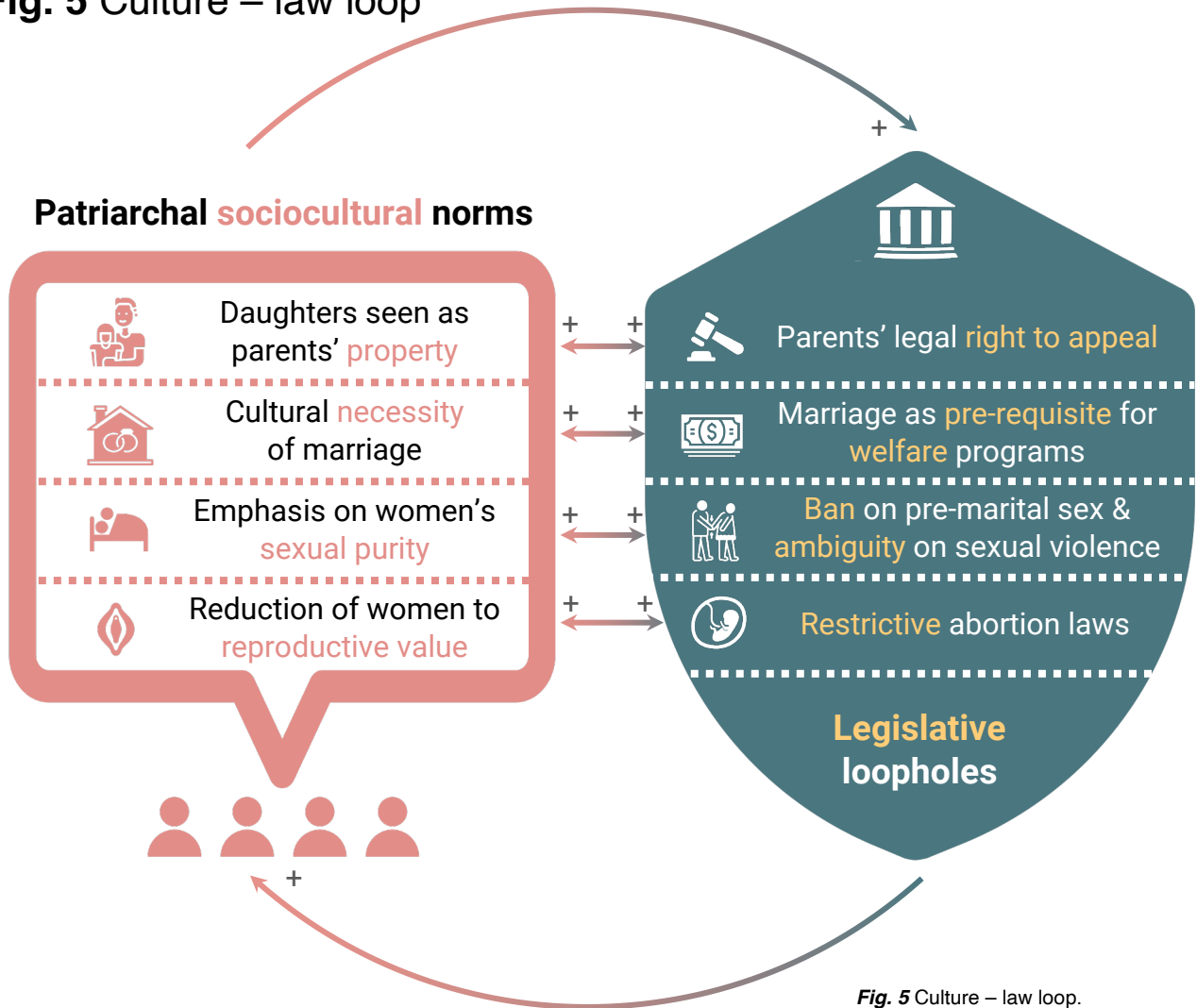


Fig. 5 Culture – law loop.

Fig. 6 Layers of governmental inefficiencies

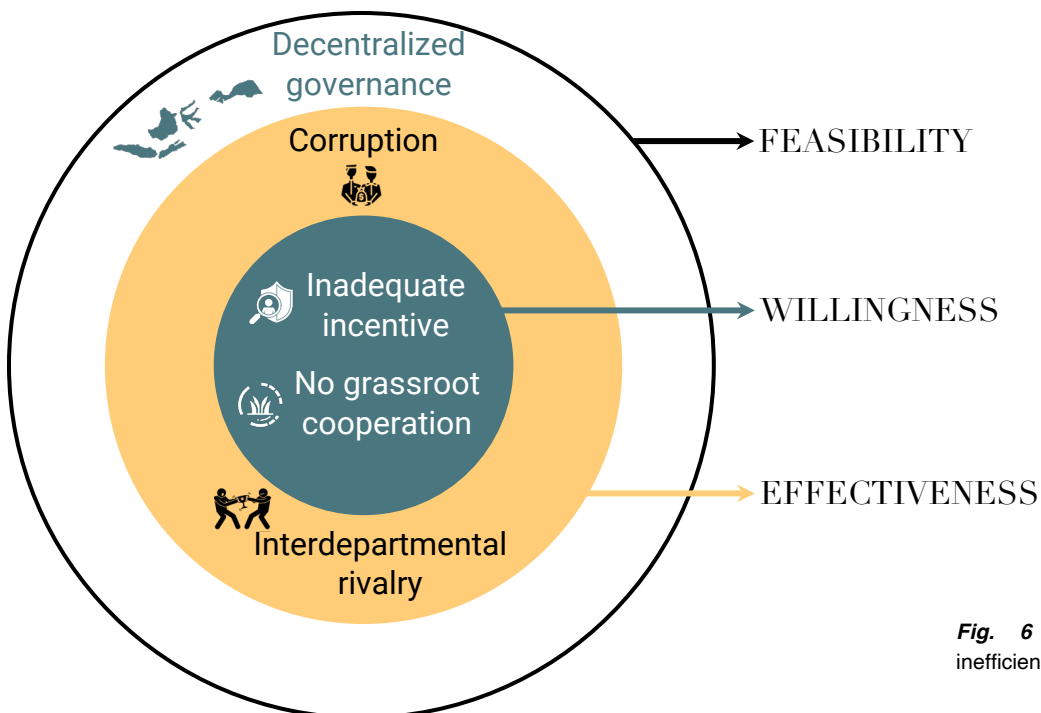


Fig. 6 Layers of governmental inefficiencies.

Systems Map

Fig. 7 Our systems map

Also accessible via <https://embed.kumu.io/7a93e0a8b5d5e488edc15a4f4160b5da>.

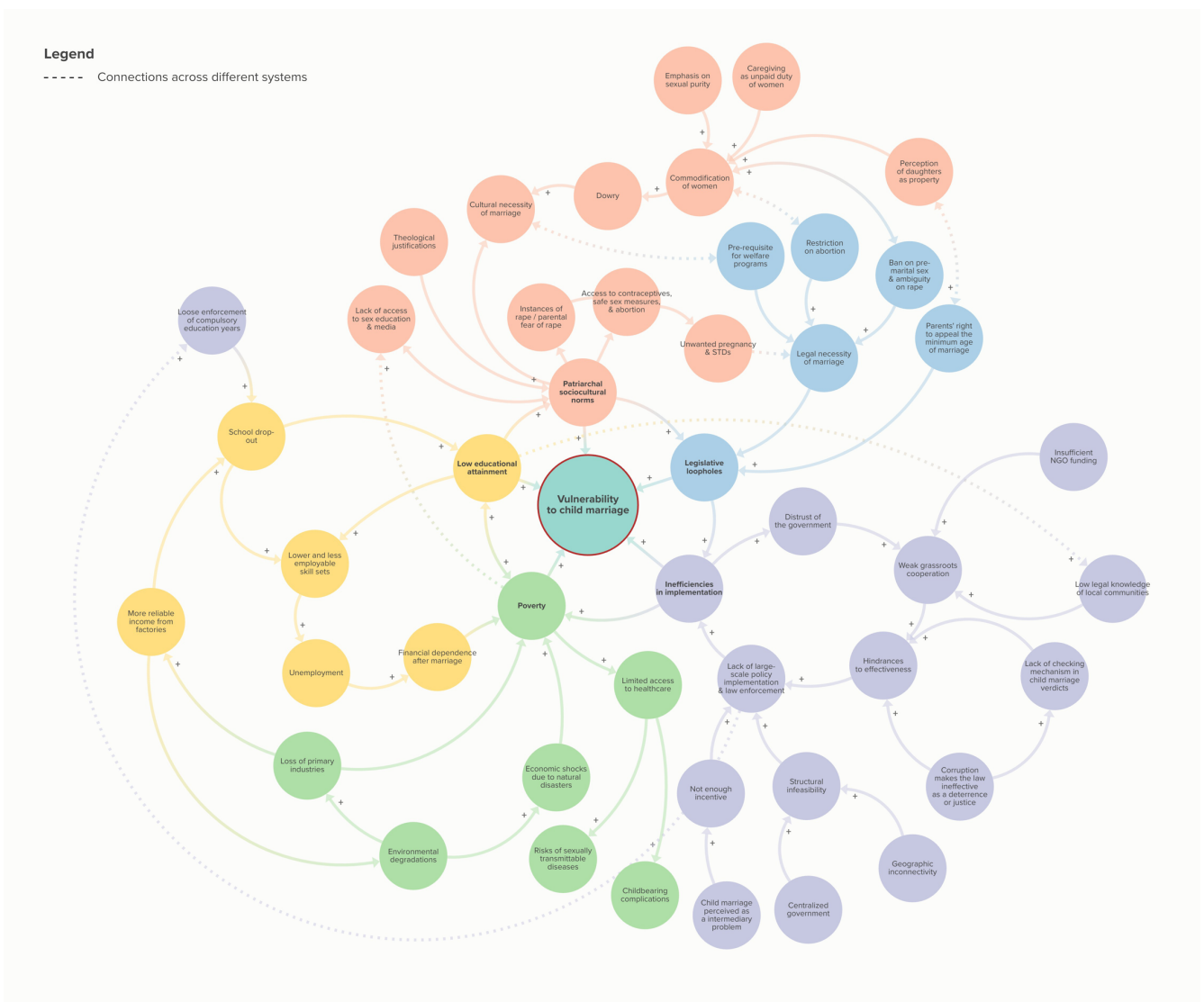
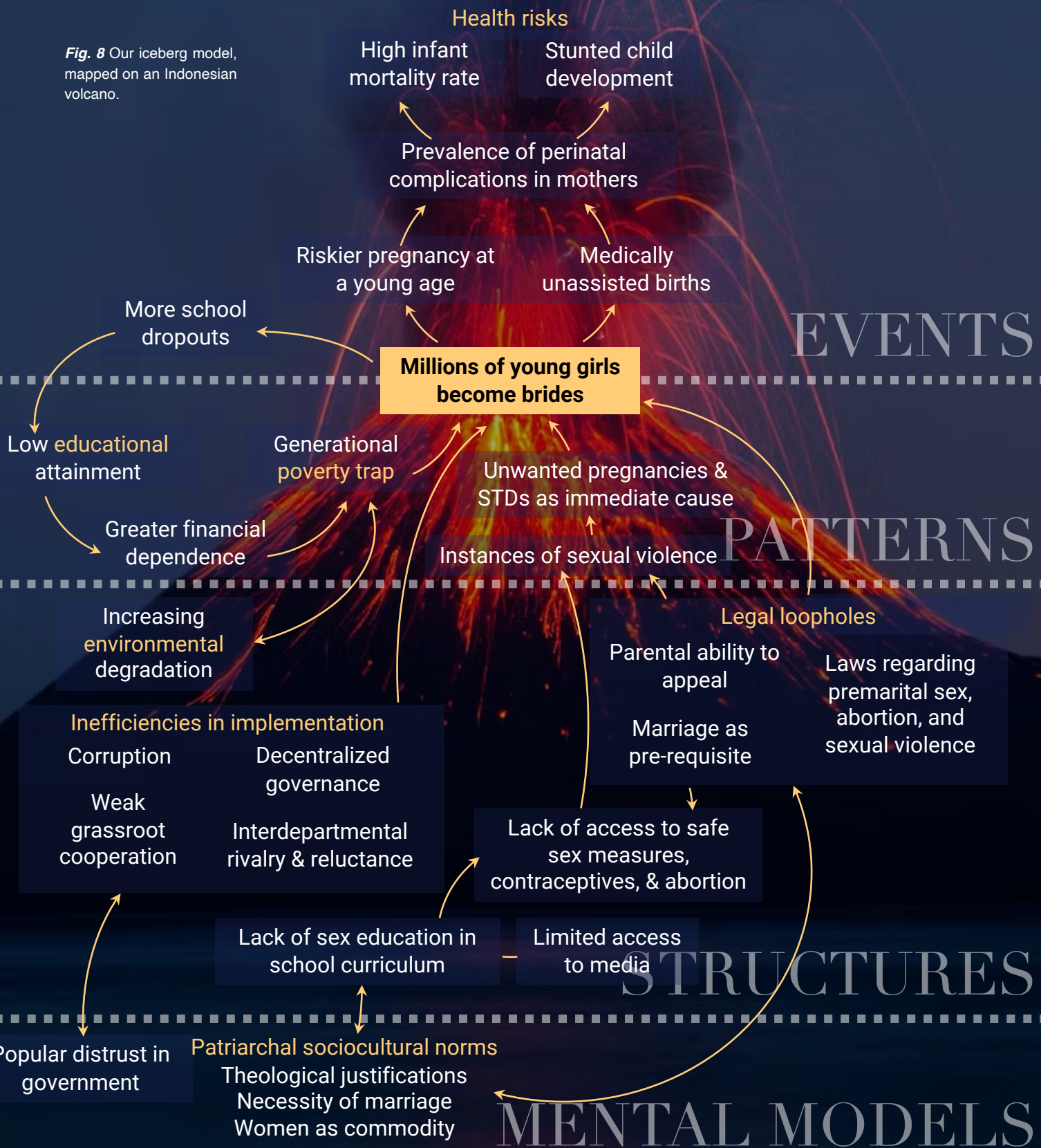


Fig. 7 Our systems map, highlighting intertwining factors influencing Indonesian girls' vulnerability to child marriage.

Iceberg Model

Fig. 8 Iceberg model

Fig. 8 Our iceberg model, mapped on an Indonesian volcano.



Stakeholders' Map

Fig. 9 Stakeholders' map

Also accessible via <https://embed.kumu.io/cf83adca9b5698ecfa3722faffa0ca01>.

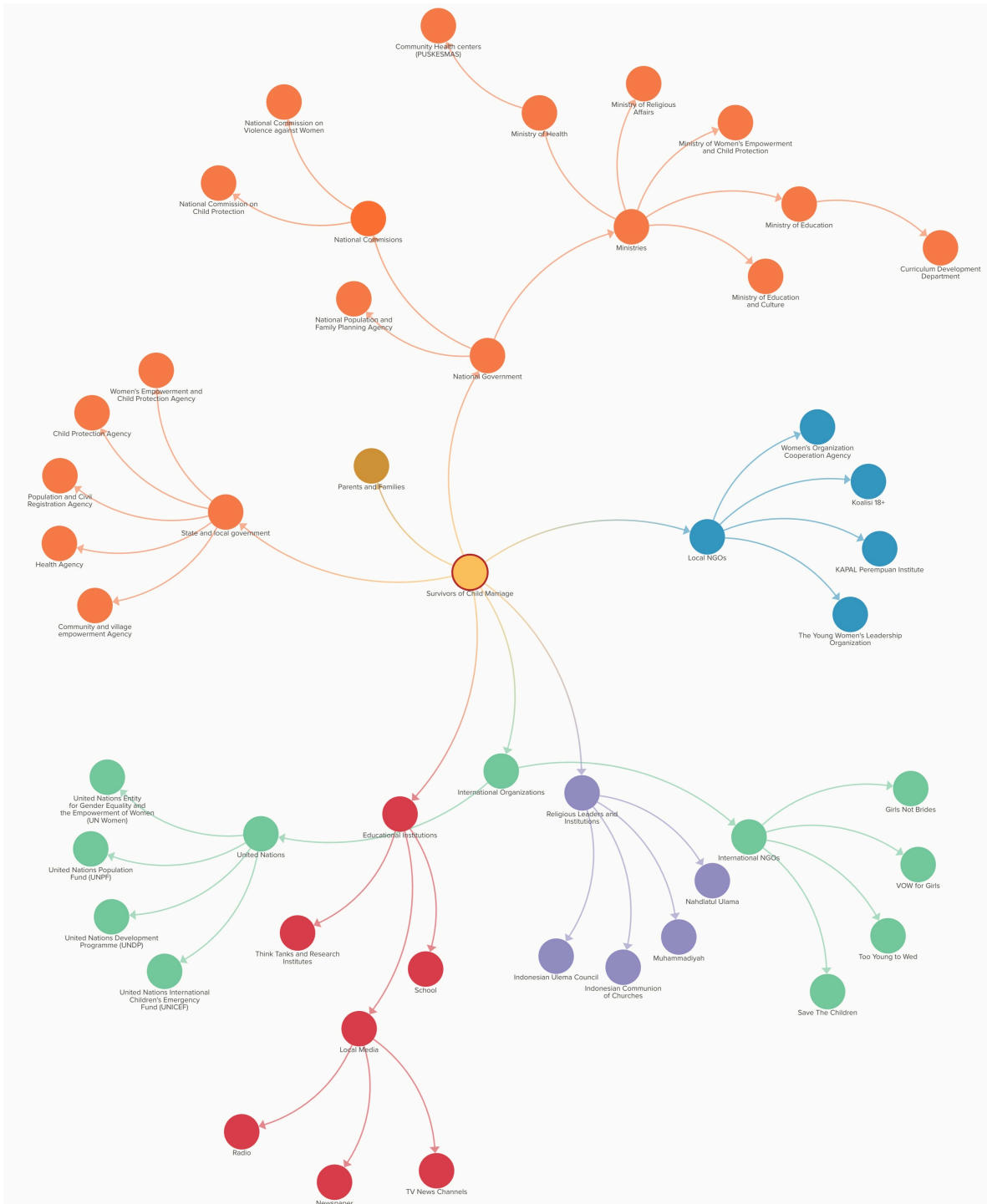


Fig. 9 A stakeholders' map.

Power & Interest Map

Fig. 10 Power & interest map

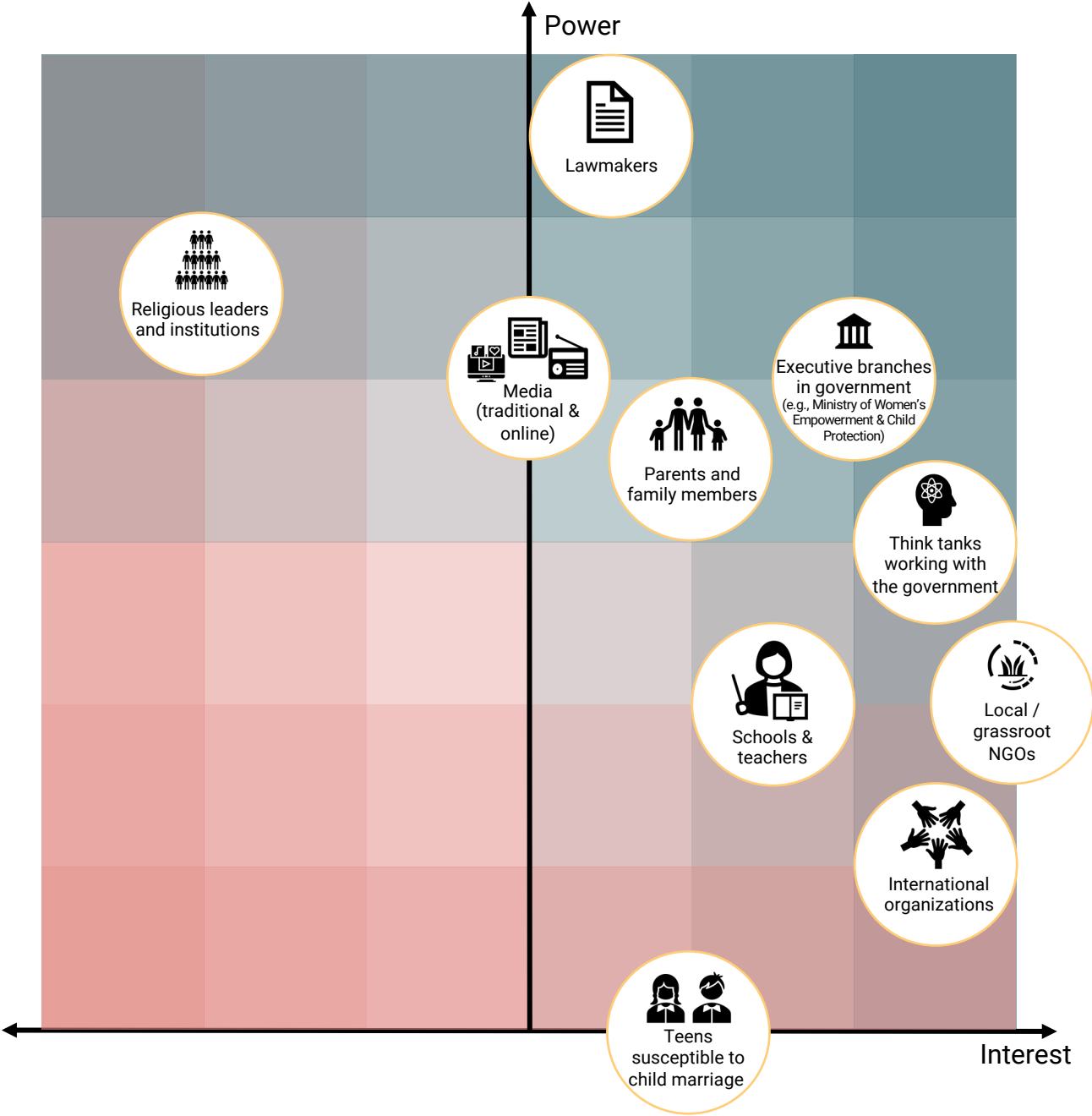


Fig. 10 Power & interest map, showing each stakeholder's willingness and ability in reducing child marriage.

Solutions Landscape

Fig. 11 Solutions landscape

National Government	Grassroot NGOs	Global Organizations
<p>Law No. 16 of 2019 on Marriage, which set the minimum age for marriage at 19 for women and men.</p>	<p>Coalition to End Child Marriage (Koalisi 18+), an NGO that aims to raise the minimum age for marriage in Indonesia and enhance legal measures to put an end to marriages that occur prematurely and involuntarily. They garner support through petitions and the creation of Amicus Curiae (Friends of the Court) as a vehicle for society's participation in the judicial process.</p>	<p>United Nations Children's Fund (UNICEF), which has implemented various programs in Indonesia to prevent child marriage, including supporting the development of national policies, providing technical assistance to local governments, and raising awareness about the issue.</p>
<p>The Indonesian government, under the ministry of women empowerment and child protection as well as the ministry of national development planning launched the National Strategy to Prevent Child Marriage in 2020, which aims to stop child marriage by 2030. The strategy includes:</p> <ol style="list-style-type: none"> 1) Optimizing children's Capacity; 2) Creating an Environment that Supports the Prevention of Child Marriage 3) Service Accessibility and Expansion 4) Regulatory and Institutional Strengthening; and 5) Strengthening Stakeholder Coordination. 	<p>KAPAL Perempuan Institute enhances the ability of women and stakeholders in local communities to collect and analyze data using appropriate methods and tools, which has resulted in consistent generation, synthesis, and dissemination of data at the lowest level (villages).</p>	<p>Girls Not Brides campaign, which aims to end child marriage globally by advocating for policy change, raising awareness, and promoting community-based solutions.</p>
<p>The "Stop Child Marriage" Movement, spearheaded by the Ministry of Women's Empowerment and Child Protection, is a collaborative effort to coordinate policy and cultural changes, legal protection, and enforcement to prevent child marriage.</p>	<p>Collaboration between the East Java Women's Organization Cooperation Agency (BKOW) and UNICEF, which works to facilitate access to education, health and life skills services.</p>	<p>The Global Partnership for Education (GPE) has supported education programs in Indonesia that aim to prevent child marriage by increasing girls' access to education and improving the quality of education.</p>

Fig. 11 Solutions Landscape. This section aims to provide an overview of the interventions that have been implemented in Indonesia to address child marriage in order to identify the gaps and challenges that need to be addressed.

Gaps & Levers of Change

Fig. 11 Gaps & levers of change

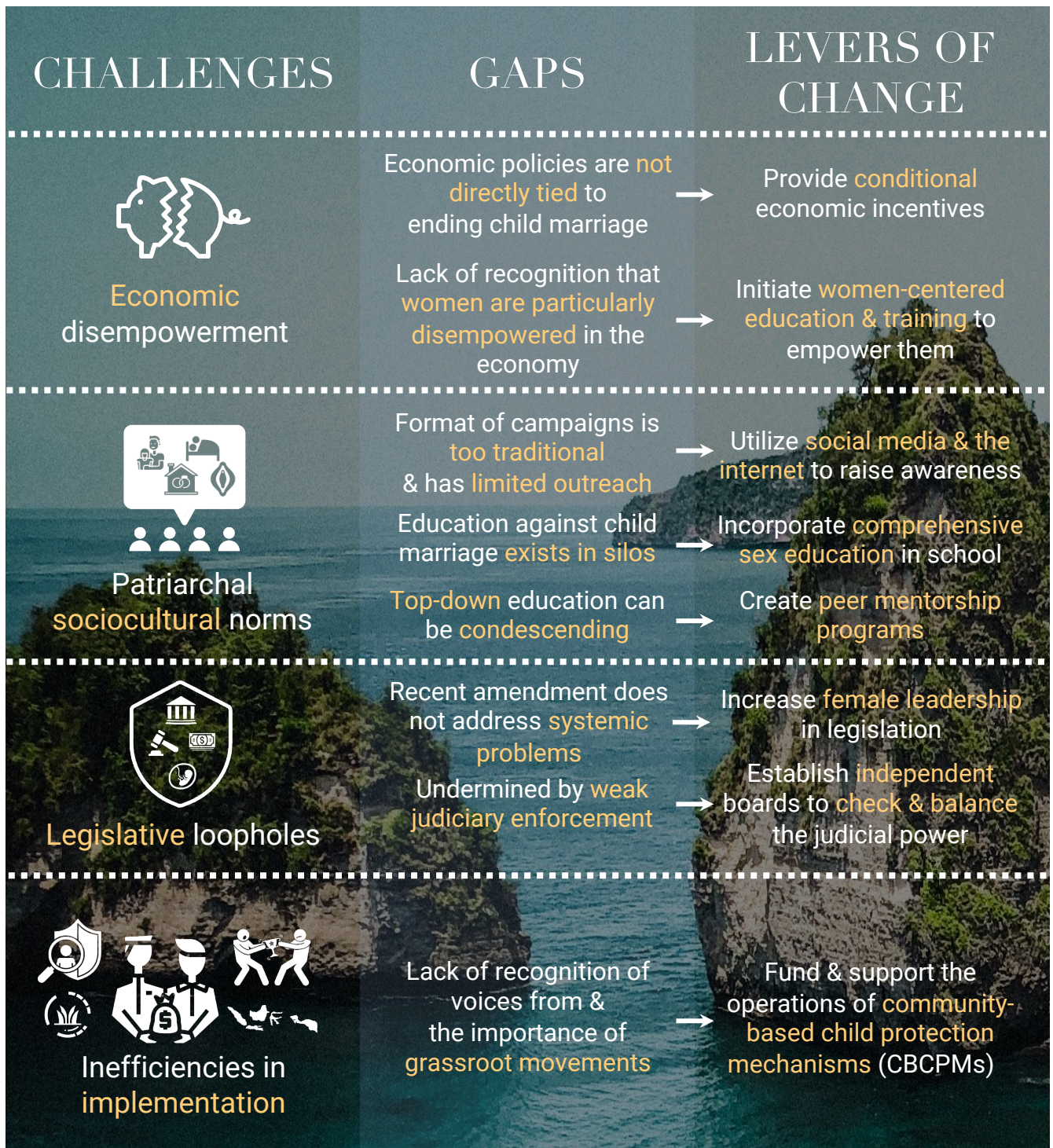


Fig. 12 Gaps and levers of change in a chart, which traces back to the four factors in our challenge landscape.