

SEXUAL VIOLENCE AGAINST WOMEN IN NEW DELHI

Delhi - The rape capital of the world

A woman or girl is raped every five hours in Delhi

Conviction rate for rape cases has dropped in past thirty years

20%

No. of rape cases pending in courts

90%

EVENTS

PATTERNS

UNDERLYING STRUCTURES

MENTAL MODELS

Poverty
1.7 million people live below the poverty line

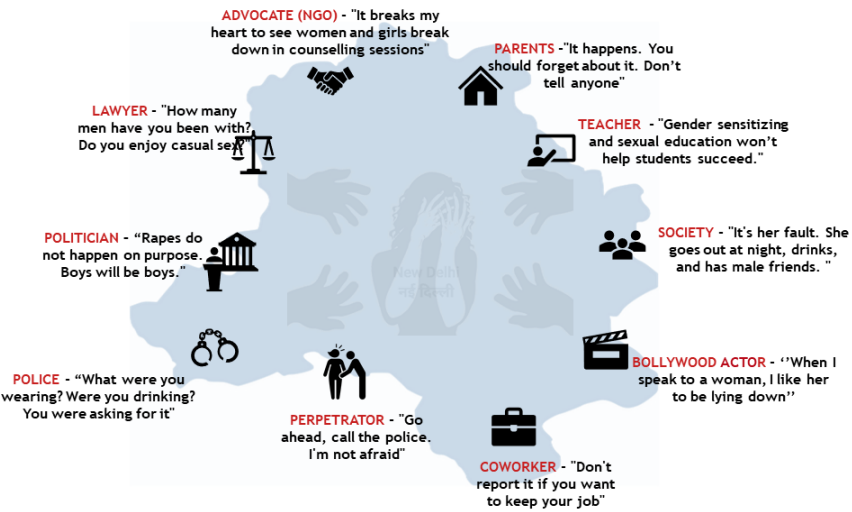
Corruption
81st most corrupt country

Caste System
4 Dalit women are raped every day in India

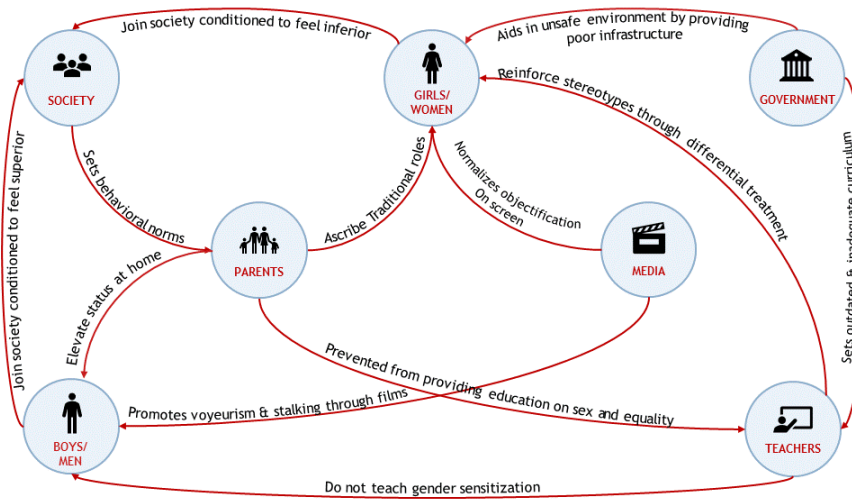
Patriarchy: Perception of women as inferior
6/70 seats in Delhi MLA are held by women

Pre-defined roles in society for both men and women
Women form only 12.19% of the city's workforce

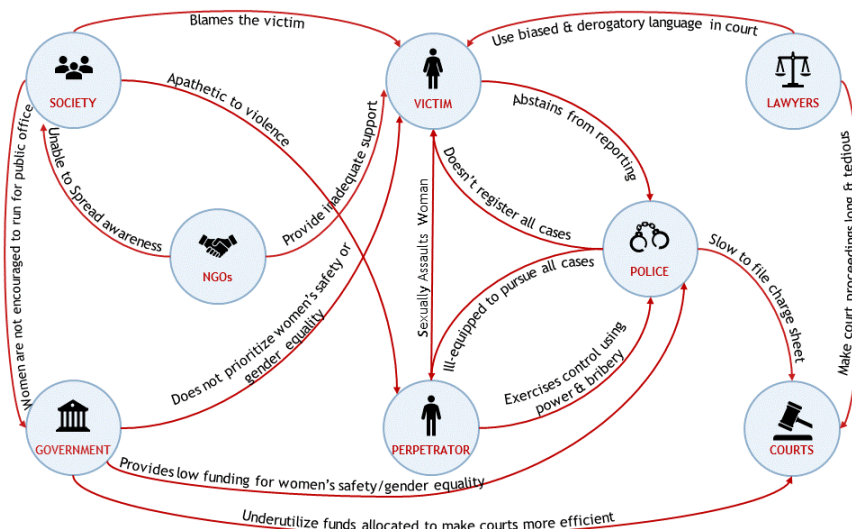
STAKEHOLDER PERSPECTIVES: SETTING THE NARRATIVE



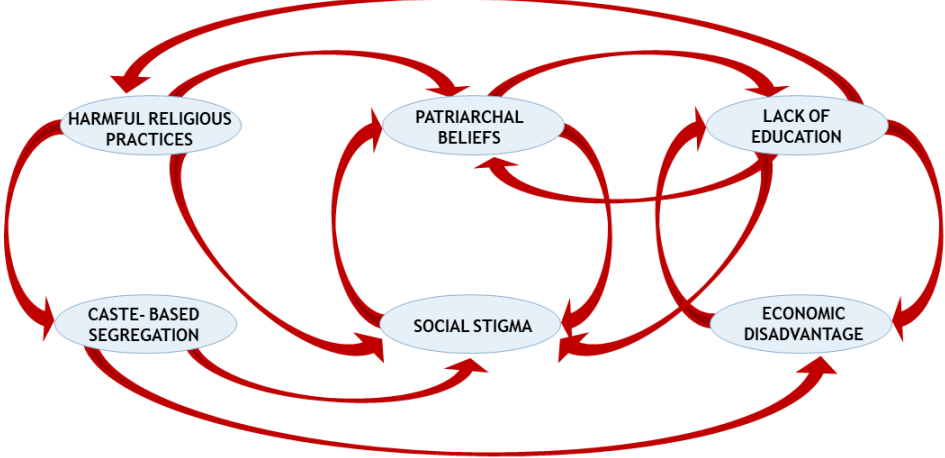
A SYSTEM THAT PROMOTES GENDER INEQUALITY



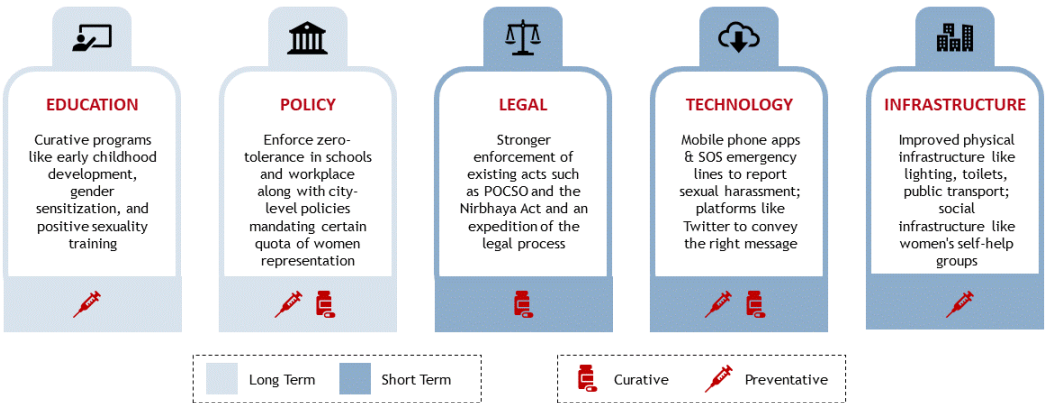
A SYSTEM THAT NORMALIZES SEXUAL ASSAULT



THE MENTAL MODELS SUPPORTING THE SYSTEM



THE SOLUTIONS LANDSCAPE



GAPS AND LEVERS OF CHANGE

SOLUTIONS

GAPS

LEVERS OF CHANGE



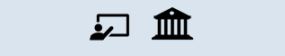
Lack of Prioritization & Implementation

Prioritize Gender Equality Through Different Media



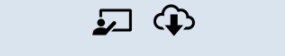
Lack of Sensitivity & Support

Create a Safe & Reliable Space for Women to Fight Against Assault



Shortfalls in Staffing & Representation

Increase the Agency & Representation of Women Across Sectors



Lack of Knowledge, Awareness, & Accessibility

Develop Effective Campaigns for Information Dissemination